

Twickenham & Richmond Tribune



Contents

TickerTape

South Western Railway

The Tree Agency

Kew opens new, groundbreaking Carbon Garden

Vince Cable Admits What the Local MP Won't: Higher Taxes for ALL are on the way

Reeves's Tax Raid Puts Ham House—and Britain's Heritage—at Risk

David McGeachie Stage at The Barmy Arms

Fire - East Twickenham

Letters

Twickenham Police Station Front Counter Closure

Twickenham Museum

Twickenham

Kew's Palm House: Victorian Icon Prepares for Landmark Net Zero Restoration

Have Your Say on Twickenham Riverside Changes

The Royal Parks and partners win prestigious ecology award

Major Progress? Only if You Ignore the Data

Luxury Flats, Lost Pools and Vanishing Credibility

Foxy goings on at the library!

Twickers Foodie: July Food And Drink News

Gibraltar Rocks Package

Richmond's Town Centre to take centre stage with new September festival

Female footy...

Mark Aspen Review: A Midsummer Night's Dream

Mark Aspen Review: Poor Clare

Mark Aspen Review: I Capuleti e i Montecchi

Curtain Raiser Party!

Twickenham Novice Swaps Pizza for Pedals in Epic Teenage Cancer Trust Challenge

Graduations at St Mary's Showcase Campus Spirit, Celebrate Students, and Honour Community Impact

Creative Arts Students Have Work Displayed at UAL Origins Creatives Exhibition

Red Roses 32-Player 2025 Women's Rugby World Cup Squad Confirmed

Connected by our nature - Brentford unveil 2025/26 away kit

Royal Botanic Gardens, Kew

Jonathan Hulley

Michael Jones

London Fire Brigade

Richmond & Twickenham Green Party

Twickenham Museum

Teresa Read

The Royal Parks

James Knight

James Knight

Richmond upon Thames Libraries

Alison Jee

Sunborn

Richmond Council

Deep Patel

Ralph Stanhope

Harry Zimmerman

Patrick Shorrocks

Richmond Shakespeare Society

Teenage Cancer Trust

St Mary's University

Richmond upon Thames College

RFU

Brentford Football Club

Editors: Berkley Driscoll, Teresa Read

[CONTACT](#)

[DONATE](#)

[ADVERTISE](#)

TickerTape - News in Brief

South Western Railway

Altered train services due to King George Day at Ascot **Saturday 26 July**

Amended Services (Pre-Event)

- 09:33, 10:33 and 11:33 London Waterloo to Windsor services will be diverted to Bracknell, calling additionally at Virginia Water and Ascot.
- 10:53, 11:53 and 12:53 Windsor to London Waterloo services will start from Bracknell, calling additionally at Ascot and Virginia Water.

Additional services (Pre-Event)

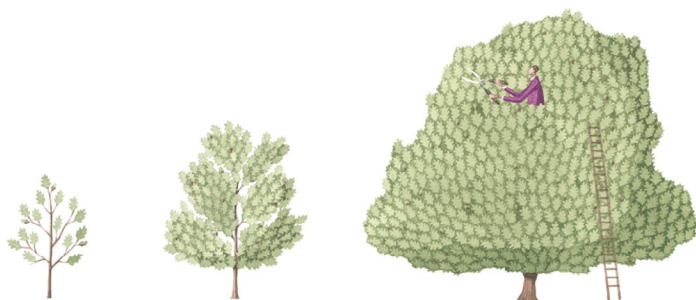
- 10:00 Waterloo to Reading – calling at Vauxhall, Clapham Junction, Putney, Richmond, Twickenham, Feltham, Staines, Virginia Water, Ascot, Bracknell and Wokingham.

Amended Services (Post-Event)

- 16:33, 17:33 and 18:33 London Waterloo to Windsor services will be diverted to Bracknell, calling additionally at Virginia Water and Ascot.
- 17:53, 18:53 and 19:53 Windsor to London Waterloo services will start from Bracknell, calling additionally at Ascot and Virginia Water.

Additional services (Post-Event)

- 18:50 Reading to London Waterloo - calling at Wokingham, Bracknell, Ascot, Virginia Water, Staines, Feltham, Twickenham, Richmond, Putney, Clapham Junction and Vauxhall.



The Tree Agency

darryl parkin

The Treehouse
25 King Edwards Grove
Teddington, Middlesex TW11 9LY
Telephone 020 8274 0107
Mobile 07960 123580
Fax 020 8274 0119
info@thetreeagency.co.uk
www.thetreeagency.co.uk



The Tree Agency

Kew opens new, groundbreaking Carbon Garden

From Royal Botanic Gardens, Kew

On Friday 25 July 2025, Kew Gardens in London opens one of its most ambitious garden projects in recent years: the Carbon Garden.

Through beautiful planting and innovative design, this new permanent garden brings to life the critical role carbon plays in sustaining life on Earth, communicates the scale of the climate crisis, and shares the extraordinary potential of plants and fungi to combat it.



What is carbon?

Quite literally 'stardust', carbon is the building block of life - it can be found in all living things. It exists in the air, it is dissolved into our oceans and rivers, it is found in organic matter in soils and is stored deep underground in sedimentary rocks and fossil fuels (99% of carbon on Earth is stored underground). However, the balance has been upset, and human activities are releasing too much carbon dioxide into the atmosphere, trapping heat and warming the planet. Plants and fungi are our natural allies in climate repair and hold the power to capture carbon and restore balance.

The Carbon Garden

A curated selection of herbaceous perennials take inspiration from Reading University's [climate stripes](#), illustrating the dramatic rise in global average temperatures over time. Plant highlights include *Achillea* 'Moonshine', 'Paprika' and 'Red Velvet', and *Hydrangea serrata* 'Bluebird'. This powerful visual statement welcomes visitors into the garden alongside an exposed coal seam showing fossilized plants, highlighting the connection between plants and fossil fuels.

Delving into links between carbon emissions and climate change, a **dry garden** begins to showcase ways we can work together with plants to adapt to a changing climate. Here, drought-tolerant plants such as Parry's agave (*Agave parryi*) and lavender dominate, illustrative of the plants we might look to for London gardens in 30 years.

Nature offers hope through its extraordinary capacity to sequester and lock in carbon. 35 new trees have been selected for their resilience to projected future climate conditions. Trees play a critical role in helping urban areas adapt to climate change thanks to the myriad of ecosystem services they offer, including absorption of carbon dioxide, shade and shelter provision, and improvement of air quality by filtering out pollutants.

A **rain garden** illustrates ways we can manage water flow, prevent soil erosion, reduce flooding, recharge moisture into the soil and support moisture-tolerant plants that maintain soil stability and carbon storage. **Grasslands, wildflower meadows** and **native hedgerows** will boost biodiversity and lock in carbon, as biodiverse habitats are more resilient and better at storing carbon than monocultures.

Appearing to grow from the centre of the Carbon Garden as a symbolic fungal fruiting body is a pavilion designed by Mizzi Studio. Inspired by the symbiotic relationship between plants and fungi, the materials and structure have been modelled on biological processes, and the pavilion has been created using natural materials. A forward-tilted canopy directs rainwater into the rain garden, and the sheltered space will support school visits and community activities.

The Carbon Garden encourages visitors to become advocates for nature, highlighting actions we can all take in our everyday lives to support the health of plants and the planet.

Richard Wilford, designer of the Carbon Garden and Manager of Garden Design at RBG Kew says: *'The Carbon Garden offers a unique opportunity to showcase our ongoing research, combining scientific insight with thoughtful design and beautiful planting to highlight the role of carbon in our lives, how it moves through the environment and how plants and fungi can help us tackle climate change. We hope the Carbon Garden inspires visitors to act and join us in shaping a more sustainable, resilient future for life on our planet.'*

Kew Science and Horticulture

With over 500 scientists and 150 horticulturists working with partner institutions worldwide, RBG Kew works at the nexus between climate change, biodiversity, and sustainable development, leading cutting-edge research into carbon capture and the role plants play in mitigating climate change. Kew scientists are assessing the carbon-capture potential of various species and ecosystems, including grasslands, hedgerows and woodlands. Early findings have revealed higher volumes of carbon are being sequestered than initially thought, highlighting the importance of these ecosystems. This research aims to inform conservation strategies and land management practices.

Simultaneously, horticulturists and arboriculturists at Kew Gardens are researching the [trees of the future](#), using Kew's 11,000 trees to assess species resilience. These projects are working to determine which plants will not only thrive in a changing climate but also mitigate the effects of the climate crisis.

The Carbon Garden has been made possible thanks to funding from [Biffa Award](#) through the Landfill Communities Fund, funds raised by players of People's Postcode Lottery, and generous philanthropy and donations.



Rachel Maidment, Biffa Award Grants Manager, says: *'We are immensely proud to support the Carbon Garden, which will educate and inspire visitors about the vital role of carbon in our environment. Through the Landfill Communities Fund, we are committed to funding projects that have a lasting positive impact on both people and the planet. We are particularly excited that this garden will not only showcase Kew's research but will also serve as a hub for learning, demonstrating how collective action can drive real environmental change. Biffa Award is honoured to play a role in bringing this vision to life.'*

Laura Chow, Head of Charities at People's Postcode Lottery says, *'RBG Kew's new Carbon Garden is a fantastic example of how support from players of People's Postcode Lottery is driving positive change for the planet. It is because of them that this innovative project can be brought to life, inspiring people to come together to learn more about the world we live in and protect nature for generations to come.'*

Opened Friday 25 July 2025, the Carbon Garden is a must-see attraction this summer at Kew Gardens which is celebrating everything that is wonderful about trees. Alongside *The Power of Trees* exhibition in the Shirley Sherwood Gallery of Botanical Art, and *Of the Oak*, an inspiring outdoor installation by Marshmallow Laser Feast which explores the secrets of Kew's magnificent Lucombe Oak, there are a host of ways to enjoy the wonder of Kew's collections.

Photos: Carbon Garden at Kew Gardens - Credit Ines Stuart-Davidson, © RBG Kew

Royal
Botanic
Gardens **Kew**

Vince Cable Admits What the Local MP Won't: Higher Taxes for All are on the way

Jonathan Hulley, Twickenham Conservative Parliamentary Spokesperson

The Liberal Democrat Illusion

The Liberal Democrats have built their political identity on a convenient illusion: that Britain can have it all – more welfare, Scandinavian-style public services, and an ever-expanding state – without ever facing the real cost.

It is an attractive story, designed to sound compassionate, but it does not add up. Politics is about priorities, and it is about tough choices. You cannot promise everything to everyone without admitting who will pay.

Here in Twickenham, Vince Cable's successor, Munira Wilson, has been one of the loudest advocates of this welfare expansionism. Whether it is higher benefits, more NHS funding or expensive environmental schemes, her instinct is always to call for more spending. But she, like most Liberal Democrats, avoids the harder question: who shoulders the bill? That is why Vince Cable's recent article in *Comment Central* is so striking because he has at least been honest about what such promises mean for ordinary families.

Whatever one thinks of his politics, Cable deserves credit for acknowledging a reality his colleagues would rather ignore.

In what may be his most candid piece of writing in years, he admitted that Britain's ageing population, sluggish economy, and rising deficit will force the government to raise between "£20 to £30 billion in tax revenue in the autumn budget" simply to keep the confidence of international lenders.

More importantly, he wrote that Britain must choose whether it wants to be "a colder, wetter version of Italy or a warmer version of Scandinavia" – and that if it chooses the latter, it must accept Scandinavian levels of taxation.

Politics, as Cable implicitly recognises, is about choices. If you want Scandinavian-style public services, you have to be prepared to pay Scandinavian taxes. Cable points out that taxes already make up almost 38% of national income in the UK – the highest level since the Second World War – but Scandinavian countries collect between 41% and 45% of GDP in taxes [IFS, 2024; OECD, 2023]. That difference may sound small, but in real terms, it means tens of billions more each year.

And he is clear about what those choices mean for families: "higher VAT, higher rates of income tax, and higher marginal rates on top earners," along with a warning that new or expanded taxes on pensions and wealth could not be ruled out.

The Real Cost to Ordinary Families

The numbers are striking. Scandinavian VAT rates average 25% compared to Britain's 20% [OECD, 2023]. For a typical family spending around £30,000 a year, that would mean an extra £1,500 every year leaving their household budget.

Scandinavian income tax thresholds are also much lower than in the UK. A British worker earning £40,000 could expect to pay £1,500–£2,000 more each year, while a household on £80,000 could face an additional £4,500–£6,500 annually. National Insurance contributions would almost certainly need to rise too, adding £600–£900 to the yearly tax bill of someone on £30,000 [IFS Household



Taken together, an average family could be **£3,000–£4,000 worse off every year** under the kind of Scandinavian-style tax system Cable openly praises. These are the tough choices that politics demands – but they are choices that Liberal Democrats prefer to disguise behind warm words and easy promises.

Taxing the Rich and Business – A Fantasy Exposed

Cable was also refreshingly honest about something Liberal Democrat activists rarely admit.

The party has long claimed that taxing “the rich” and big businesses could pay for welfare expansion, sparing ordinary voters.

The same applies to businesses. At the last general election, the Liberal Democrats claimed they could raise billions by taxing companies more heavily, but as the Institute for Fiscal Studies pointed out, this argument assumes businesses absorb the cost. In reality, businesses pass higher taxes on to consumers through higher prices or to employees via lower wages. Cable himself now accepts that “penal taxation of company profits makes no sense if the aim is to promote investment.”

These are exactly the trade-offs that serious politics requires you to face. You cannot simply wish them away because they are politically awkward.

Would Britain Ever Accept the Scandinavian Model?

The deeper question Cable raises, even if he does not fully explore it, is whether Britain would ever accept the Scandinavian model he admires. Scandinavian countries have high social trust, cultural cohesion and a long-standing political consensus that high taxes are worthwhile because public services deliver value for money.

Britain is very different. Public trust in government spending is lower, and families already feel overtaxed and under-served.

Asking them to hand over thousands more each year on the promise of Scandinavian standards of welfare will strike many as deeply unconvincing. Would the money simply go into the pockets of striking doctors and railway workers, rather than improved public services as voters recently found out?

And here again, politics is about priorities. If we are to ask families to make sacrifices, we need to show them results, not simply expand spending in every direction without reform or accountability.

The Lib Dems Must Be Honest With Voters

It is easy to stand on a platform of demanding ever-greater public spending. It is easy to promise free childcare, higher benefits, more generous pensions, and ambitious environmental schemes. But politics is about choices. It is about telling voters not just what you want to spend, but how you will pay for it.

On that, at least, Vince Cable deserves credit. He has been honest about the hard choices politics demands, even if it is not what voters want to hear. His Lib Dem colleagues should show the same honesty.

They must stop pretending Britain can have Scandinavian-style welfare without Scandinavian-style taxation.

Because the truth is clear: under Liberal Democrat plans, every British family will pay the price, thousands of pounds more every year, whether our local MP chooses to admit it or not.

Reeves's Tax Raid Puts Ham House—and Britain's Heritage—at Risk

By Michael Jones

The National Trust will cut 550 roles, around six per cent of its workforce, in a move that strikes at the heart of Britain's heritage sector. The charity blames soaring costs following Chancellor Rachel Reeves's Autumn Budget, which raised employer National Insurance and the minimum wage, adding £10 million to its annual wage bill.

This is not a question of public interest falling away. Visitor numbers are up, donations are growing, and membership remains strong. The Trust insists that rising operating costs, not waning popularity, are forcing its hand. A recruitment freeze, delayed projects and now redundancies form part of a £26 million cost-saving plan. The Prospect union, which represents many of the staff at risk, has warned that the cuts will weaken the Trust's ability to care for the historic houses, gardens and landscapes entrusted to it.

"Knowledge That Cannot Be Replaced"

Steve Thomas, Prospect's deputy general secretary, describes the cuts as a "serious risk" to institutional expertise. These are not merely catering jobs being lost; many of the threatened positions are held by experienced conservation assistants whose painstaking work on historic textiles, decorative plasterwork, and delicate gardens takes years to master and cannot simply be replaced by seasonal volunteers.

The National Trust pledges to safeguard "core" services. However, critics highlight that support staff - those who manage visitor services, deliver educational programmes, or carry out routine but essential maintenance - are equally vital to keeping sites lively and publicly relevant. Once these roles vanish, they are unlikely to be reinstated.



Ham House: A Masterpiece of Stuart England

Among the properties facing disruption is **Ham House**, the remarkable 17th-century mansion on the Thames at Richmond. Built in 1610 by Sir Thomas Vavasour and transformed by William Murray, Earl of Dysart, the house offers one of the finest surviving glimpses of Stuart aristocratic life. Its interiors remain almost untouched since the 1670s, from gilded ceilings and carved panelling to rare tapestries and cabinets collected on the Continent.

The property's fortunes have long depended on skilled stewardship. After the last Tollemache heir died in 1935, Ham House suffered years of neglect before being handed to the National



Trust in 1948. The contents, however, were administered separately by the Victoria & Albert Museum until 2002, when full custodianship finally returned to the Trust. That transfer enabled a sensitive restoration programme, reviving the gardens to their original 17th-century design and reuniting objects with the rooms they were intended for.

To jeopardise such a triumph of conservation now, critics argue, is reckless. The work done at Ham House is not just about aesthetics;

it is a living record of England's political and cultural history.

A Tax Policy That Misses Its Target

Reeves defends her tax increases as part of a long-term plan to stabilise the public finances. But heritage organisations are not profit-making corporations with shareholders who can absorb higher costs. For a Labour chancellor, the irony is stark: the policy meant to secure Britain's future risks eroding some of its most tangible links to the past.

The National Trust is far from alone. English Heritage and several leading museums are also preparing job cuts, all citing the same pressures. Britain's cultural treasures are effectively being asked to balance the books for Whitehall, a short-sighted approach that could leave a lasting scar on the nation's historic landscape.

A Heritage Fight on the Horizon

The 45day consultation will determine where the axe falls, but for Ham House and other vulnerable sites, the damage may



already be done. Once experienced staff walk away, their expertise and commitment rarely return. Britain risks learning too late that its heritage is only as strong as the people who protect it. Reeves's policies may succeed in raising revenue, but at what cost? If the government does not reconsider, the next chapter of Britain's history could be one of loss; not just of jobs, but of the stories, craftsmanship and beauty that connect us to our past.

Twickenham's best FREE day of live, local music
Sunday 27th July



**BARMY
ARMS**



DAVID McGEACHIE STAGE @ the Barmy Arms



This stage Sponsored & Hosted by **David McGeachie**

1.00-1.50pm DAVE MAC 3

Rock, pop and disco covers, joined by Lefty Pete on bass and Will Spurling on drums

2.20-3.10pm THE DEPUTIES

One of the top bands on the circuit, fronted by the magnificent Belinda, went down a storm last time and will be the same this time!

3.40-4.30pm THE SEMI-DETACHED

Great local band led by Jim Guynan that does fab covers that aren't always done by other bands – then you hear them and wonder why, as the song choices are fab! A Must-See.

5.00-6.00pm THE GROOVY BOYS

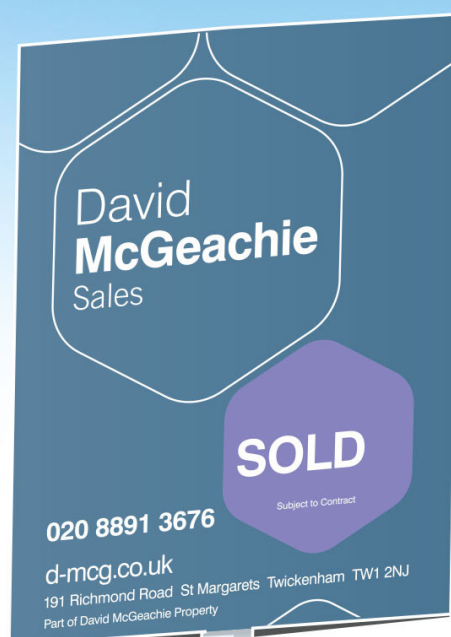
Every Groovies gig is a non-stop jukebox of hits, done as the originals with no messing about. It was so good last year we had to have them back!!

6.30-7.30pm ROLAND AND THE ALLBEATS

Roland has been well-known around here for decades, with a fan-base like no other. He, Lee, Paul and Simon now deservedly taking their turn to close the show...

We also support PowerJam and Meath School

Barmy Arms Pub, The Embankment, Twickenham TW1 3DU



For a sales or lettings valuation, contact David on
020 8891 3676 / info@d-mcg.co.uk / d-mcg.co.uk

'I'd give David 6 stars
out of 5 if I could!!!'
client Grant Swan

Fire - East Twickenham

From London Fire Brigade

Ten fire engines and around 70 firefighters were called to a fire on Richmond Road in East Twickenham on Friday (18 July)

The fire involved a three-storey mixed-use building, made up of a shop on the ground floor and flats above. The roof and second floor were damaged along with part of the first floor and ground floor. An outbuilding was also destroyed by fire.

One man was taken to hospital by London Ambulance Service.

The fire was producing a large amount of smoke and people in the area were advised to keep windows and doors closed.



The Brigade received the first of 34 calls at 16:38 and Control Officers mobilised crews from Richmond, Twickenham, Chiswick, Acton and surrounding fire stations to the scene.

A 32-metre turntable ladder from Clapham Fire Station was also in attendance and being used as a water tower to help extinguish the fire from above. The fire was brought under control by 1820.

The fire is believed to have been caused by the unsafe disposal of smoking materials near a timber storage shed.

A London Fire Brigade spokesperson said: *"If you smoke it is vitally important you stub it right out, preferably in an ashtray."*

"Always ensure your cigarette is completely out when you've finished smoking it. If you don't, you risk causing a fire as you don't know what it may land on which could potentially start a fire."



Dear Tribune,

Gone West!

It is now absolutely unsafe to walk our streets.

On 31 January 2002, Judge Roger Davis said: *"All over London people are violent, attacking other people just as they did in the 18th century"*.

That is even more true nowadays.

Council Leader Gareth Roberts has rightly condemned the closure of our local police station front counters. But that's rather ironic seeing as how it's his Council that has added to the dangers by encouraging the uncontrolled proliferation of cyclists, many of whom put us all in danger by rampaging through our streets and pavements with impunity. www.richmond.gov.uk/news/news_july_2025/police_counter_closure_twickenham

So the next time anyone needs to physically discuss a crime, such as being assaulted by a cyclist illegally on the footway as has happened to me several times, they will have to travel to Acton, Sutton, or Lambeth. But with constant stabbings, street robberies, and a good chance of being smashed into by an e-bike or e-scooter, the chances of getting there in one piece seem pretty slim. Cynics might say it's an easy way of reducing crime figures by ignoring those who can't report them online. A recent survey found that only 40% of crimes in London were reported because most people think that, as in my cases, nothing will be done: <https://victimscommissioner.org.uk/news/london-victim-attribution-report-troubling-sign-victims-continue-being-let-down-victims-commissioner/>

I spend much of my life in Japan where every neighbourhood has its own mini police station (Kōban). They are manned 24 hours a day with at least one sergeant and two constables who all know everyone in their area because they constantly patrol it on foot, by bike, and by car, and talk to people. If you call in when they're out on patrol, a touch screen animation with a friendly, bowing police officer will welcome you to make your report. I have suggested this several times to our local police and Council but the idea was simply ignored, just like any other good idea that they haven't thought of themselves.



Kōban

What do we have here? Instead of a professional, VISIBLE, public service, we have the occasional 'Cuppa with a Copper' in a supermarket coffee shop – laughable and demeaning to our police officers.

There are many reasons why Japan has the lowest crime rate in the world but having visible police actually out on patrol is obviously one of them. Other reasons include the homogenous nature of Japanese society and its language and a nationwide culture of impeccable manners, all of which are noticeably lacking in the UK where rudeness and its attendant aggression rule the streets.

Dodge City in the 1860s was safer than London is nowadays. Amazing that you would be safer in a Kansas cow-town!

So much for living in what our Council calls *'The best place to live'*.

I'd be safer in Dodge City.

Michael Jay
Hampton.

Twickenham Police Station Front Counter Closure

From Richmond & Twickenham Green Party

The news that the 24/7 front counter at Twickenham Police Station has shocked Green Party councillors, who are the Opposition on Richmond Council.

Deputy Leader of the Opposition Chas Warlow said: "We're very concerned to hear about the closure of the front desk at Twickenham Police Station, which reduces still further the presence of the police in Richmond borough as a whole. It smacks of penny-pinching at a time when our public services need bolstering and the image of the Met is just starting to recover."

Councillor Richard Bennett, who represents South Twickenham ward, said: *"Twickenham residents will not be happy about this news. The Met say that most contact with the police is now online rather than in person but removing the front desk will exclude the most vulnerable people in our society, those who cannot access online services easily such as the elderly, the disabled and children. And how easy is it going to be to find or hand in lost property, for example? What will a parent do if they lose a child when out shopping?"*

Green  Party RICHMOND & TWICKENHAM

Twickenham Museum

On Sunday it is the High Tide festival in and around Twickenham and we will be open 2-4pm. FREE entry and some discounts on books! Small table outside.

'Some Interesting People'. From £6 to £3

'Mr Pope & Others'. From £10 to £5

Lovely 'Riverside Map'. Just £2.00!



See you then!

Areas in our borough are known for their association with rock music from the 1960s. It was not the only area where a new genre of music was popular but the fact that the Stones played locally has left its mark on Twickenham.

Long before the Rolling Stones arrived in Twickenham, the area was brought alive by Charlie Shore – a well-known waterman whose name became synonymous with a famous Regatta https://www.memoriesoftwickenhamriverside.com/charlie_shore.html - a regatta that Berkley Driscoll and I did our best to recreate for a number of years, under the name of Twickenham Alive.

The revival of the Charlie Shore Regatta for Boys and Girls, an annual Twickenham event from 1894 to the 1950s, was our first of annual event on Twickenham Riverside, held over two days in September 2011.



In 2012, the Queen's Diamond Jubilee Year, Twickenham Alive organized the Twickenham Alive Jubilee Festival - sponsored by the Rugby Football Union (RFU) - producing a programme of events over a two-week (three weekends) period from 2 June until 16 June finishing with a live music stage at the Barmy Arms.

Events included two live music stages on The Embankment, dragon boat racing, the Blue Mile (a national Stand-Up Paddleboarding event), the Charlie Shore Boys and Girls Regatta, markets on the Embankment, a children's fairground, water zorbing and Shetland pony rides in the Statue Gardens. Following the Twickenham Riverside festival, in July, Berkley and I worked alongside the RFU with Frazer Cullen organizing the Strawberry Hill Music and Fun Day, our first annual charity event at Strawberry Hill House, with over 8,000 people attending.

TWICKENHAM ALIVE RIVERSIDE FESTIVAL 2013

THURSDAY 6th JUNE - SUNDAY 7th JULY



Twickenham Alive Riverside Festival will feature a considerable number of community activities at Twickenham Riverside and nearby. Lots of fun events, music, entertainment, action and fun for kids.

FESTIVAL PROGRAMME	Some events and times subject to change
Thursday 6th June	D-Day Dance 19.30 to 23.30 Ed Pic Island Raising funds for charity
Saturday 8th June	Twickenham Alive Charity Mile Kayak & Stand Up Paddleboarding Races 10.00 to 20.00 - The Embankment Help raise funds for charity
Sunday 9th June	Twickenham Alive Dragon Boat Races 10.00 to 18.00 - The Embankment Help raise funds for charity
Sunday 15th June	Radnor Gardens Family Fun Day 12.00 to 19.00 Live Music Stage Bar, Stalls - Food & Crafts, Pony Rides Strawberry Hill House Club Taster Sessions for Adults and Kids Children's Fairground
Saturday 22nd June	Stand Up Paddleboarding Marathon 12.00 to 17.00 Paddle from Kew to Twickenham and back
Sunday 23rd June	Twickenham Alive Dragon Boat Races 10.00 to 18.00 - The Embankment Help raise funds for charity
Sunday 30th June	Family Fun Day on The Diamond Jubilee Garden TBC From 12.00
Sunday 7th July	RFU Strawberry Hill Music & Fun Day Live Music Stage Bar, Stalls, Food & Crafts Water Zorbing, Pony Rides Children's Fairground

See www.twickenhamalive.com for further information



www.twickenhamalive.com

TWICKENHAM ALIVE SPONSORED BY THE RUGBY FOOTBALL UNION

In 2013 the Twickenham Alive Riverside Festival, taking place from 7 June until 7 July, was supported by the RFU. Events included a D-Day Dance at Twickenham Rowing Club, a Twickenham Alive supported SUP event, Dragon Boat races, the Charlie Shore Children's Regatta, a children's Fun Fair, Shetland pony rides, water zorbing, an open-air market on The Embankment, as well as a Family Fun Day in Diamond Jubilee Gardens with live music stages. Later in July, Berkley and I worked with the RFU organizing the annual Strawberry Hill Music and Fun Day.

Twickenham Alive's river-related events continued annually, including Dragon Boat races, the Charlie Shore Children's Regatta, riverside music stages, various types of markets and children's fairgrounds.

Rugby Post Spring 2013/Issue 49
Click image to view the full magazine

In 2014 the RFU decided that it was time to hand over the Music and Fun Day to another organization and for two years Berkley and I organised the Twickenham Alive Music and Fun Day in the grounds of historic Strawberry Hill House. Twickenham Riverside Regattas continued in 2015 and 2016.



Our aim has always been to bring back what Twickenham has lost; we organized three winter ice rinks before starting The Twickenham & Richmond Tribune. Perhaps few people remember that this was a time when local newspapers were facing difficulties, including our most well-known newspaper suffering from an industrial dispute, and moving away from the borough.



During the COVID-19 pandemic the Tribune provided local news, as well as relevant weekly information from the World Health Organization. Today, we continue to work with members of the community to provide a forum where everyone can contribute their news and views.



https://www.worldinfozone.com/features.php?section=Twickenham%27s_News

Teresa Read

Note: "World InfoZone" is my personal project in worldwide collaboration - from Twickenham

Kew's Palm House:

Victorian Icon Prepares for Landmark Net Zero Restoration

The Palm House at Kew Gardens, one of the finest surviving examples of Victorian glasshouse architecture, is slated for a transformation that aims to secure its future for another century. Plans have been submitted to Richmond Council for a £60 million restoration that will preserve this Grade I listed masterpiece while transforming it into the world's first net-zero heritage glasshouse of its kind. Work is scheduled to begin in 2027, with the project expected to be completed by 2032.

A Triumph of Victorian Engineering



Completed in 1848, the Palm House was designed by architect Decimus Burton and built by Irish iron founder Richard Turner. The two combined elegant neoclassical design with the innovative engineering of the time. Turner's pioneering use of wrought-iron ribs, inspired by shipbuilding techniques, allowed the building to have sweeping hull-like curves. The

Palm House was one of the first major structures to utilise wrought iron on such a scale, pre-dating the Crystal Palace by several years.

At nearly 19 metres tall, with a grand central nave flanked by two lower wings, the building amazed visitors of the era. The Palm House was more than just a botanical shelter; it was a display of imperial ambition. Exotic plants brought from around the world—many collected during Britain's great age of exploration—were showcased in a carefully engineered tropical climate in suburban London. Visitors ascended to the raised gallery to look down into the canopy, marvelling at palms and ferns growing much taller than would have been expected in Britain's natural climate.

Its smaller companion, the Water Lily House, was added in 1852 to house the Amazonian giant water lily, *Victoria amazonica*. Together, these two glasshouses helped establish Kew Gardens as one of the world's leading centres of plant science.

A Living Museum of Rare Plants

The Palm House today shelters over 1,300 tropical species, including 45 endangered plants and several species extinct in the wild. Among its most renowned specimens is the *Encephalartos altensteinii*, a cycad, believed to be the oldest potted plant in the world, having been brought to Britain in the 1770s. These plants make the Palm House a museum of living history as much as a piece of Victorian architecture.

However, the unique environment that maintains this collection has contributed to the building's deterioration. High humidity and constant heat have corroded the ironwork, while thousands of glass panes leak energy. The last major restoration, carried out in the 1980s, repaired much of the structure but used glazing and sealants that are now outdated.

Restoration Plans: Balancing Heritage and Innovation

The planned works aim to conserve the Palm House's historic fabric while adding discreet, modern technology. All 16,500 glass panes will be replaced with high-performance sealed glazing, carefully matched in appearance to the original. New silicone gaskets will improve insulation without altering the Palm House's distinctive look.

The entire wrought-iron frame will be stripped, repaired, and repainted in its traditional soft white. Conservation engineers are working to ensure that repairs adhere to historic techniques, thereby maintaining the building's Grade I listing and preserving its historical integrity.

For the first time in its history, the Palm House will switch to renewable energy, with air- and water-source heat pumps replacing the ageing gas-fired system. Rainwater collection and upgraded irrigation will improve water efficiency, while the heating and ventilation systems in the basement will be rebuilt to meet the specific needs of the plants.

Beyond essential repairs, the restoration will restore features of the original design. The north and south apses will be reopened, restoring sightlines intended by Burton. The surrounding landscape will also return to Sir William Nesfield's original ornamental garden layout, with the removal of a century-old hedge that has long blocked the iconic view from the Rose Garden.

Protecting the Plant Collection

Preparations are already in progress to protect the Palm House's living treasures. Kew's horticultural team has started the delicate task of relocating rare plants to new specialised glasshouses built on site. Many species require careful propagation, re-potting, and techniques such as air layering to ensure their survival. Some of these plants, including several rare orchids and palms, have no living counterparts in the wild.

A Historic Structure at the Forefront of Sustainability

The Palm House has long been a symbol of innovation since it was completed. In the 19th century, it was at the forefront of engineering; in the 21st century, it aims to serve as a global example of sustainable heritage conservation. If successful, it will demonstrate that even the most delicate and historically significant buildings can adapt to modern climate objectives without losing their historic character.

The Palm House has endured nearly two centuries of change, weathering world wars, environmental shifts, and the demands of millions of visitors. Its upcoming transformation will guarantee that future generations can continue to enjoy the wonder that captivated Victorian audiences almost 180 years ago. It will remain what it has always been: a monument to human ingenuity, botanical exploration, and a belief in science's ability to broaden our understanding of the natural world.

Photo: Palm House at Kew Gardens © RBG Kew

Have Your Say on Twickenham Riverside Changes

Residents now have the opportunity to comment on significant changes to the Twickenham Riverside redevelopment. A new Section 73 planning application has been submitted, and the consultation period is underway. Many of the amendments differ considerably from what was originally approved in 2022, raising concerns about safety, accessibility, and whether the scheme still respects the character of the Twickenham Riverside Conservation Area.

What Has Changed?

The developer describes the amendments as “minor material changes”, but the impact on Twickenham’s riverside is far from minor, and the planning department, to their credit, has called the application “major.” The scheme does include some positive elements, such as new planting and improved public access, but these are overshadowed by serious concerns about safety, accessibility, and the loss of heritage character. Below is an outline of some of the changes and outstanding issues.

Tarmac Instead of Stone

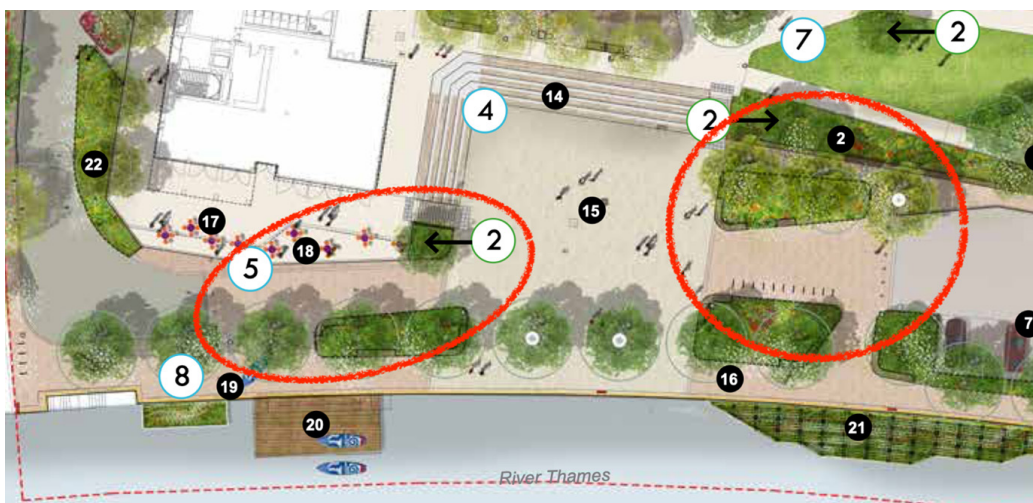
Water Lane, situated at the heart of the conservation area, was originally planned to be resurfaced with granite setts to enhance the historic riverside setting. The new plans substitute this with buff-coloured tarmac, a cost-saving measure described in the planning statement as “value engineering”. The original artistic impressions, still displayed in planning documents, continue to feature stone paving – which many residents will find misleading.

River Safety Ignored

The Port of London Authority had recommended additional safety measures, including grab chains and improved guarding along the river wall. These have not been implemented. The existing railing, which does not conform to modern safety standards, will remain unchanged, even in busy areas such as near the Barmy Arms. See this Port of London document [HERE](#)

Pedestrian Safety Risks

The new service road has two pinch points where pedestrians must share space with delivery vehicles. Although a few bollards have been added, there is no continuous protected walkway, leaving families with children, wheelchair users, and those with mobility difficulties exposed to unnecessary risks. The lack of handrails on the steps and staircases worsens the situation, especially for elderly and disabled individuals, and does not meet the standards set by Approved Document M of the Building Regulations for safe and accessible access. This raises serious concerns about whether the Council is fulfilling its duty of care to protect vulnerable road users.



Fewer Safe Places to Sit

The Council claims the scheme now provides “more seating overall,” but most of this will be timber slats fixed to low concrete walls, with no backrests or armrests. This design excludes many elderly and disabled residents, who require supportive seating to rest safely and comfortably. Counting terraces

and café chairs as “public seating” is misleading, as these are either uncomfortable or only available to paying customers. By failing to provide inclusive seating, the scheme risks breaching the Council’s duties under the Equality Act 2010, which requires public spaces to be accessible to all, including those with mobility impairments.

Security Concerns at Flood Lane

A large bin store will be built along the Flood Lane entrance, obstructing sightlines and creating potential security risks, especially after dark. The narrowing of this key pedestrian route makes it easier for someone to hide and harder for passers-by to see or be seen. This contradicts the Council’s own Violence Against Women and Girls Strategy, which prioritises designing out hidden spaces. Given the public commitments councillors have made through initiatives such as the White Ribbon campaign, residents will rightly question why these concerns have not been fully addressed in the revised plans.



Every Tree Has Been Felled

The site has now been cleared of all its original trees. A single large specimen tree at the rear of the site, which had been earmarked for retention, was accidentally felled during site clearance. Mature riverside trees, including a native black poplar and eleven London planes, have also been removed. The replacements will be planted in lined tree pits, deliberately restricting root growth, which means they are unlikely ever to reach the size, canopy spread, or ecological value of the originals. For decades to come, the new riverside gardens will offer little shade or habitat compared to what has been lost.

Why This Matters for the Conservation Area

The Twickenham Riverside Conservation Area is meant to be preserved and enhanced. Replacing heritage-quality materials with tarmac, removing all trees, and introducing visually intrusive service structures breaks that principle. Many of these changes have been made for cost reasons rather than to enhance design quality, which is not in line with the promises made when the scheme was first approved. Once these changes are built, the historic riverside character could be permanently altered, with little chance of reversal.

These changes have been submitted as a variation rather than a new application, meaning they have not undergone the same level of public consultation as the original scheme. Resident scrutiny is therefore vital to ensure the plans are properly examined.

How to Comment

Application 23/5499 can be viewed by following the link [HERE](#)

Important changes may be buried within technical documents – the more eyes on them, the better. Residents who review the documents and comment now can help ensure the full impact of these revisions is properly considered before a decision is made.

Images from Richmond Planning website

The Royal Parks and partners win prestigious ecology award for research on soil health in urban parks

From The Royal Parks

The Royal Parks charity has won a celebrated ecology award from the Chartered Institute of Ecology and Environmental Management (CIEEM), for its research on the relationship between plant diversity and soil health.

The award-winning study, possible thanks to players of People's Postcode Lottery, found that grassland areas with a diversity of plant species had healthier soils which store more carbon.



These research findings underscore the potential for urban grasslands to act as significant carbon sinks, contributing to climate change mitigation. The research was undertaken in partnership with Greengage Environmental and London Wildlife Trust and won CIEEM's Climate and Nature Action 2030 Award.

Urban grasslands are globally widespread but remain under-researched compared with other ecosystems. The project sampled soils across different grassland areas of the Royal Parks, researching areas of both undisturbed grassland, due to reduced mowing regimes, and grassland which saw high disturbance, for example, caused by high footfall.



The Royal Parks delivers a multitude of conservation projects to improve the grasslands and make them more resilient to climate change. This includes leaving many areas to grow into longer grass

meadow, and where possible, using traditional methods such as working with Shire horses to cut the grass rather than using heavy tractors. Reducing reliance on machinery means less pressure on the soil beneath, leading to healthier soil which stores more water and carbon.

Andrew Scattergood, Chief Executive of The Royal Parks charity, said: *"In the face of the climate emergency The Royal Parks charity's research and monitoring work becomes an increasingly important tool in conserving the Royal Parks for future generations."*

"Soil is one of our greatest assets. It forms the foundation of the parks' famous grasslands where millions of visitors walk, exercise, relax and play, as well as providing some of the parks' most biodiverse habitats. It is where thousands of trees and plants grow, and it stores carbon, manages rainwater flow and filters pollutants. "We're thrilled to have our soil health research recognised at these prestigious national awards."

"We will continue to integrate soil health and biodiversity monitoring into routine management practices and tailor activities such as plant selection and mowing regimes to maximise ecological benefits, providing excellence in park management for both visitors and wildlife."



Major Progress? Only if You Ignore the Data

By James Knight

Richmond Council's **Policy and Performance Review Board** met on 17th July at York House to assess the borough's services. The meeting uncovered some genuine improvements but also revealed serious failings that require proper scrutiny. The officers' performance report was carefully managed in tone, yet it still contained clear evidence of significant underperformance.

What was most striking was how little councillors challenged these failings, despite being paid generous allowances – allowances they recently voted to increase for themselves. Residents have every right to expect that, in return, their elected representatives should ask tough questions rather than simply thank officers for their work.

Voter ID and Voting Rights



The first point was the impact of the Elections Act and its requirement for voters to show photo identification. Officers reported that only 0.08 per cent of voters were turned away at the General Election, most of whom returned later with the correct ID. However, the breakdown revealed a different story. Awareness among 18 to 24-year-olds was just 71 per cent compared to 87 per cent overall, and people from ethnic minority communities were also less likely to be aware of the rules.

Only 188 online and five paper applications were submitted locally for Voter Authority Certificates, reflecting national concerns that many people without acceptable ID were effectively excluded because they missed the deadline.

Councillors discussed outreach efforts ahead of the 2026 local elections. Suggestions included TikTok campaigns, college partnerships, and competitions to engage younger voters. Green councillor Caroline Wren advocated for cross-party collaboration with schools and community groups and warned that post-Brexit changes to voting rights for EU citizens were also discouraging participation. However, several Liberal Democrat councillors shifted the discussion towards making a political statement, advocating for a letter to MPs calling for the rules to be abolished. This shift away from practical solutions will have done little to reassure residents who struggled to vote this year.

Performance: Progress and Problems

The Corporate Performance report for 2024 to 2025 highlighted a year of progress, and in some areas that was accurate. Social care demonstrated genuine improvements. About 80.9 per cent of enquiries were resolved at first contact, significantly surpassing the 75 per cent target. Homelessness prevention cases rose to 222, up from 180 last year. Digital care technology now supports nearly 2,500 people to stay independent at home, and hospital reablement services are delivering strong results, with 94.5 per cent of patients requiring less or no ongoing care.

Education was also highlighted as a success story, with 94.6 per cent of Education, Health and Care Plans (EHCPs) completed within statutory timescales, compared to 43 per cent the year before. Officers described this as a remarkable turnaround, but the reasons were not explored. The Council has tightened its criteria for assessing children for EHCPs, meaning fewer children are now entering the system. Improved figures do not necessarily indicate better outcomes for children with special educational needs; they may simply mean that more families are being turned away, which is the case here.

The rest of the report highlighted significant underperformance. Only 29 affordable homes were completed against a target of 66. Temporary accommodation use increased by 15 per cent, driven by rising rents and evictions. Foster care recruitment has declined, with just 39 per cent of children in care placed with council foster carers, compared to 51 per cent last year. Environmental services also faced difficulties. Recycling rates continue to fall short of the ambitious 46 per cent target, and inspections of high-risk massage and special treatment premises within the statutory timeframe dropped to 50 per cent, down from 88 per cent.

Yet councillors failed to challenge any of this with real urgency. Officers offered explanations; construction delays, staff vacancies, market pressures, but few pressed them on why the same problems persist year after year or what would be done differently.

The Press Release and the Reality

The following morning, the Council's press office issued a press release titled 'Richmond delivers for residents in a major year of progress.' It highlighted Family Hubs, £7 million in climate funding, 800 trees planted, and 17 homes purchased for temporary accommodation. It claimed "major progress delivered across all service areas".

The depiction of the meeting was very different from reality. Usage of temporary accommodation has increased, not decreased. Targets for affordable housing were missed by more than half. Recruitment of foster carers is in rapid decline. The SEND Futures Plan warns of spiralling costs, but none of this was mentioned. Even the carefully managed performance report admitted that 15 per cent of indicators were rated red.

Scrutiny or Soft Politics?

The performance report might have been tone-managed, but at least it provided the data showing where the borough is failing. The real disappointment was the behaviour of the councillors. Their job is to hold the administration to account on behalf of residents, yet they failed to properly challenge the weaknesses laid bare in the report.

This is even more concerning considering that councillors recently voted to increase their own allowances. Residents could justifiably expect that, in exchange for these generous payments, they would conduct thorough scrutiny, not mere polite nods and congratulatory remarks. Richmond residents deserve honesty and accountability, not political spin from the press office and gentle questioning from those elected to serve them.

You can see the papers for the meeting and watch the webcast [HERE](#)

Luxury Flats, Lost Pools and Vanishing Credibility: The Liberal Democrats' Riverside Gamble

By James Knight

For a party that once pledged fiscal responsibility and community empowerment, Richmond's Liberal Democrats are now in an uncomfortable position. Their flagship Twickenham Riverside redevelopment is estimated to cost at least £67.2 million, with the Council revealing a net public expense of £37 million: a figure that excludes significant sunk costs and hidden subsidies. At a time when councils across the country are struggling to balance their budgets, this is an astonishing sum. It may also undermine what remains of their credibility, not only among the public but even among their traditional Green allies.

Compare this with neighbouring Kingston. There, the Liberal Democrat-run council faced a similar dilemma: an ageing leisure facility, rising construction costs, and public pressure to deliver value. Their solution? Pull the original plan, rethink it, and come back with a £44.5 million leisure centre. It includes a swimming pool, gym, sports hall, soft play, and café all within a single, coherent building in the centre of town.

Twickenham, by contrast, will spend more and receive less. The plan omits a swimming pool, a leisure centre, and features that could be achieved at a lower cost through modest landscaping and community involvement.

Redeeming Promises Over Prudence

The Council claims the riverside plan will revitalise the town centre, provide new housing, and enhance the public realm. However, in reality, it is mainly fulfilling campaign promises made during the last local elections; merely checking boxes on glossy pledges rather than exercising serious financial judgment. Under the Local Government Act 2003, councils are legally obliged to ensure their spending is "affordable, prudent and sustainable." Yet, by committing tens of millions to a riverside development, largely financed through borrowing, Richmond risks undermining not only public confidence but also its statutory duties. The pursuit of political legacy at the expense of fiscal restraint is not civic leadership it is vanity governance disguised in architectural renderings.

The £37 million net cost to Richmond Council, as confirmed in recently released papers, does not include the £6.8 million spent in 2019 to acquire King Street commercial properties, now valued at £8.7 million once inflation is taken into account. Nor does it include the value of the existing Diamond Jubilee Gardens or the riverside promenade, both public assets that will be cleared to facilitate the scheme.

While the project promises 21 affordable homes, these are heavily cross-subsidised, mainly from developer contributions to fund off-site social housing from other private developments across the borough. Therefore, despite claims to the contrary, the development does not create new social housing but relocates it from elsewhere in the borough. The Council claims it will recover some funds from housing and commercial sales, but no detailed breakdown has been made public. What is clear is that a scheme presented as a public investment is in fact a highly leveraged property play, with long-term liabilities passed quietly onto future generations.

Even the Greens Are Uneasy

In private, some of the Council's more left-wing Green members are said to be nervous. They

have been asking whether the scale of borrowing can be justified. The £1.85 million annual cost to the revenue budget is not hypothetical. It is real money that will need to be found every year, in an era of tightening local authority finances and rising service demands.

And then there is the optics. The Council has brought in a main contractor from the HS2 programme, prompting some residents to label the project “Twickenham’s HS2” a reference that is not flattering. High cost, delayed delivery, exaggerated benefit; the parallels are uncomfortably close.

Financing Risks

The Council’s claim that it can finance the £37 million net cost of Twickenham Riverside at an interest rate of just 3% has raised more than a few eyebrows in financial circles. Current Public Works Loan Board (PWLB) rates – the standard, reliable source of local government borrowing sit closer to 5%, making the Council’s projection unusually optimistic.

The most plausible explanation is that Richmond intends to borrow via the UK Municipal Bonds Agency, a scheme that allows councils to issue debt collectively on the capital markets. It offers flexibility, but at a price: if any member authority defaults, the others are legally obliged to cover the debt. In the wake of high-profile collapses in Croydon and Thurrock, that is not a theoretical risk. Richmond has been here before. During the construction of the Civic Centre at York House, the Council entered into a so-called low-interest borrowing scheme that promptly unravelled, leaving residents with years of higher costs. It is difficult to avoid the impression that history, like the borrowing, may be compounding.

Even on the Council’s own figures, the cost of servicing the debt for the Riverside scheme will hit £1.85 million a year. This is a significant and ongoing pressure on the borough’s revenue budget. That money will not be spent once, but every year, for decades. In an era where councils across the country are cutting libraries, social care, and road maintenance to stay afloat, it is a striking commitment to a project centred around luxury flats, cafés and decorative paving. Worse, the payment obligation is locked in before a single brick is laid. Should construction costs rise further, as they already have, or sales underperform, the Council will be left covering the shortfall from its core budget. The Riverside may soon be known not just for its aesthetic ambition, but for the quiet erosion of everyday services that paid for it.

No Pool, No Plan B

The political fallout is already showing. Residents are asking why Twickenham, a town of national sporting prestige, still has no public swimming pool, decades after the last one closed. Why was it never included in this plan? Why does a borough that claims to champion well-being and active living have no place to swim?

Kingston gets a pool. Twickenham gets luxury flats, an ornamental treehouse, and a spiralling debt obligation.

The Liberal Democrats may believe the riverside scheme will be their legacy. But if the numbers continue to climb, and the borrowing continues to bite, it may well become their epitaph.

Missed Opportunity to Reinstate an Outside Pool on Twickenham Riverside

Support for the return of the pool on Twickenham Riverside continues

This week's support from residents is 4,867 (an increase from 4,857 last week)
You can view and sign the petition [HERE](#)

Previous Lido concepts: <https://twickenhamlido.com/video.html>

The Cost of the Current Council Plan

The London Borough of Richmond upon Thames' present Twickenham Riverside Housing and Pub plan to cost an estimated **£67.2 million** (recent reported borrowing **£16.8 million**)

Foxy goings on at the library!

From Richmond upon Thames Libraries

This was popped through our letterbox this morning... for all those worried that we were preventing young, eager minds from accessing books...Libraries are for everyone!

DEAR LIBRARY

SORRY I GAVE YOU A BIT OF A SHOCK ON
TUESDAY MORNING...

I'D POPPED IN FOR MY USUAL BEDTIME
STORY AND ACCIDENTLY FELL ASLEEP!

YOURS SINCERELY,



P\$ THESE BOOKS WERE BRILLIANT!



There was an unexpected visitor to Twickenham Library when a fox decided to pop in and make themselves VERY comfortable!

The library team had to close the up temporarily to remove the fox, who we can only assume was after some Roald Dahl...

July Food And Drink News

Where is our summer going? It seems to be rushing past all too fast.

If you'd like to spice up your culinary repertoire, I thoroughly recommend checking out the excellent **Christy's Kitchen** range. Brought up on a very plain diet, Christy developed some great spice mixes and soon his hobby had developed into a profession. There's a collection of fabulous spice blends that are very versatile and will cover you from everyday cooking to BBQ. Buy one tin or a bundle (which will make a superb gift) plus, the tins are very generously filled, allowing you many chances to experiment. The range includes: Mexican Stand Off - Mexican Spice Blend; Jerk Jamin' - Caribbean Spice Blend; Kick Bang Thai - Thai Spice Blend; Indian Espresso - Indian Spice Blend; Arabian Nights - Middle Eastern Spice Blend and Amore D'Italia - Italian Spice Blend, From £8.99 a tin at christyskitchen.co.uk



Attention all fans of kombucha: **MOMO** has a new limited edition flavour - **Watermelon** - and it's really great. It's a another successful collaboration with Natoora and available from **MOMO, Natoora, Gail's Bakery, Selfridges, Planet Organic** and **Whole Foods Market** (RRP £4.50 per 330ml glass bottle) until September '25. MOMO's unfiltered kombucha blends perfectly with **Sentinel Watermelon**, resulting in a burst of sweet, fruity flavour, perfectly balanced by the classic zingy tones of Kombucha. This may be the lightest, most refreshing kombucha MOMO has ever made, and it really highlights both the quality of the produce and kombucha as a medium.

If orange is more to your taste, here's a sunshine soaked alternative to an Aperol Spritz coming from Cornwall. This summer, **English Spirit**, has launched two zesty new stars: Orangino as well as Limongino. **Orangino** is a bittersweet orange gin liqueur made with real fruit and no artificial additives, while **Limongino**, bursts with the zest of Amalfi lemons and English gin, - perfect served straight from the freezer or topped with fizz. They're made with real fruit, distilled in copper pots, with no artificial colours, flavours, or preservatives. The ABV is 22% and it's priced at £26 for a 50cl bottle from englishspirit.uk



Talking of flavours, I was tempted to try a few of the latest **Venchi** gelato recipes recently and I was blown away. This takes ice cream to a new level of deliciousness. There are three Mediterranean-inspired gelato flavours that celebrate Italian culinary tradition and innovation: **Extra Virgin Olive Oil** combines **Laudemio Frescobaldi Extra Virgin Olive Oil** and a fior di latte base enhancing the slightly spicy and herbal notes of the oil. **Parmigiano Reggiano** matches the cheese with a fior di latte enhancing the sweet-savory notes of the cheese, and flakes of the cheese add texture. **Caramel & Rosemary** balances creamy caramel crunchy crumbs, with the fresh, slightly bitter flavour of rosemary. Check out the Richmond store and be daring, it's worth it! And while you're there, treat yourself to a jar of the wonderfully rich **Milk Chocolate & Piedmont Hazelnut Spread with Extra Virgin Olive Oil** - it's not cheap, but then quality like this never was.



Looking for a fresh way to kickstart your morning or power through that afternoon slump? [Plenish](#) has you covered with its **new Ginger Energy Shot**, a clean, natural boost to keep you energised and focused. Formulated with Yerba Mate, ginger root and fortified with 100% of vitamin B6 with vitamin C, iron, this new shot provides a natural, balanced energy lift. Plenish has also revamped its **multi-serve Dosing Bottle** format, now containing 7 shots so providing one for each day of the week. Plenish Ginger Energy and the new multi-serve bottles are available via [plenishdrinks.com](#), and in major retailers nationwide including Sainsbury's and Tesco (£6) and Ocado.



Still on a health theme, I've not really been a fan of rice cakes, until now... [IBIS Rice](#), the Cambodian rice brand, backed by renowned conservationist Chris Packham, has launched a new product - **Bean & Rice Cakes**. These delicious, nutty, bean & rice cakes are a natural source of protein and additional fibre, making them a tasty and nutritious snack. IBIS rice is traditionally grown rice, planted a once-a-year with the seasonal flooding from the monsoons. Working with farmers on soil improvement, IBIS Rice has established inter-cropping with red black-eye beans. The beans naturally fertilise the soil, improving yields, and nourishing soils to support wildlife and help safeguard the forests. Now, with one rice crop a year and two bean harvests before and after the rice season, IBIS Rice farmers are paid three times a year instead of once, and the income

diversification is a key part of building climate resilience and future sustainability into their livelihoods.

If you're looking to elevate your summer gatherings with some good fizz, look no further than the **Bouvet 'Saphir' Saumur Brut Vintage 2023** (£16 at [Majestic](#)), a discerning choice for anyone seeking bubbles in the sunshine. Crafted using the traditional method, this award-winning vintage sparkling wine is a testament to quality and elegance. Made from a blend of Chenin Blanc and Chardonnay, Saphir Saumur Brut Vintage 2023 boasts a brioche-rich character that sets it apart. Each bottle is numbered and produced in limited edition. This wine delivers a delicious biscuity flavour, complemented by peachy, honeyed, and nutty notes. It's a truly classy bottle that offers exceptional quality at incredibly good value.



Providing the perfect treats for this sunny season, **LAKRIDS BY BÜLOW** has a limited edition summer collection of its chocolate-coated liquorice, inspired by the vibrant taste of a sunny escape. Available in two refreshing flavours: PINK PINEAPPLE, new for this year, and



returning favourite LEMON. In addition to the fruity lineup, this summer also sees the permanent return of the popular SOUR STRAWBERRY. This MIXED tub offers the ultimate indulgent treat, offering a combination of all three flavours (£28.99 for a generous tub weighing a hefty 550g) The summer collection is available to order online and buy in-store at Selfridges, John Lewis, Harvey Nichols, [lakridsbybulow.co.uk](#), and the LAKRIDS BY BÜLOW stores in Canary Wharf, Monmouth Street, Seven Dials, and Westfield

sunborn
GIBRALTAR
YACHT HOTEL RESORT



GIBRALTAR ROCKS PACKAGE

STAY ON THE ONLY PURPOSEFULLY BUILT 5 STAR FLOATING YACHT
HOTEL IN THE WORLD AND EXPERIENCE A BRITISH TERRITORY
IN THE MEDITERRANEAN!

2 nights in a Superyacht Deluxe Room

Substantial breakfast buffet including Full English Breakfast

Bubbly Afternoon Tea for 2 guests on the top deck

Discover Gibraltar's Top Attractions with Gibraltar Pass

Price £489.00 per package for 2 guests
(plus £3 per person / day tourism tax)



GibraltarPASS



BOOK NOW | WWW.SUNBORNGIBRALTAR.COM | RES@SUNBORNGIBRALTAR.COM

Richmond's Town Centre to take centre stage with new September festival

From Richmond Council

Richmond's streets will pulse with music, creativity and community this September, as a brand-new festival takes over the heart of the town centre.

Set for Saturday 13 September 2025, the free event will transform George Street and Whittaker Avenue with live performances, dance workshops, roaming theatre, street food, communal dining and hands-on art activities – offering something for everyone.

From a youth-led opening procession to an evening of live music and DJ sets, the event will shine a light on local talent and Richmond's creative spirit, with confirmed partners including Orange Tree Theatre, Combination Dance, The Basement Door and Richmond Music Trust.

Councillor Katie Mansfield, Lead Member for Richmond Town Centre, said: *"This festival is all about bringing fresh energy to our town centre. Whether you're seeing a street performance with friends, dining outdoors or stepping on stage for the first time, this is your invitation to get involved."*



The event draws on Richmond's unexpected legacy as a hub of youth culture – from the 1960s Crawdaddy Club to jazz's revival in the 1980s – while looking ahead to the next generation of performers, creatives and communities shaping the borough's identity.

It will also showcase some of the town's lesser-known landmarks – from the riverside boatyards and historic theatres to independent businesses and cultural venues. Visitors can also expect local buskers, pop-up dining, and even a classic

Routemaster bus experience hosted by Peter Hendy.

Councillor Gareth Roberts, Leader of Richmond Council, said: *"Residents want to see real change in our town centre, not just more plans. This festival is a clear step forward; it's a change people can see and experience on the high street. It's also a reminder that Richmond isn't just a historic town – it's a creative one too."*

The festival marks a visible moment in Richmond's wider Town Centre Vision, focused on improving public spaces, supporting local businesses, and creating a high street that brings the community together.

Councillor Mansfield added: *"A great high street should feel welcoming to everyone – whether you're eight or 80. This is part of a much bigger effort to make our town centre more vibrant, inclusive and alive. It's a way to try new ideas, build partnerships, and show what's possible when we use our streets differently. It's also a chance to celebrate the talent and energy already here. We encourage people of all ages to come and explore, enjoy, and help shape what Richmond's town centre can become."*

The festival programme, including event times and activities, will be announced in the coming weeks.

Female footy...

By Deep Patel

~Life Through the Eyes of a Twickenham Shopkeeper~



England's women's football team have made it to THE WORLD CUP FINAL this Sunday...It's coming home...It's coming home...It's coming...football's coming home... anything boys can do, girls can do better...Gentlemen of Twickenham and Richmond re-read that line (and get used to hearing it)... because when England women win the World Cup (yes, I said when, not if) you will have to remember that line for good.

This week my customers have been talking about the World Cup final a lot in my shop. It is interesting to hear the various views and conversations regarding this event over my counter at Meet & Deep Newsagents on Hampton Road, Twickenham. So, what have I heard? What haven't I heard should be more like the question...I have heard customers say all sorts of things, you name it they have said it, from comments such as "this is an exceptionally proud moment in the history of sport, a true victory for gender equality" to other not so supportive comments such as "women should stick to netball, sewing and other things they are good at"...none the less, one of the joys of being a shop keeper is that you get to hear it all, the good, the bad and the ugly...it's sometimes a case of having to bite my tongue and smile sweetly, but every conversation, every interaction adds to my understanding of where others are in their own development and path of life, and gradually it is these interactions that help me progress on my own...

An elderly man who is a regular customer in my shop and lifelong football-mad fan had a very different take on this all...I was both enlightened and somewhat shocked to hear what he had to say about women and football. He has over £40,000 of football memorabilia in his home and knows every team back to front as well as

which year which team won which tournament and even who scored (only the best customers come to my shop). I was telling that man that many of my football loving customers whom come to my shop tell me that women's football is "rubbish as they can't even play the game properly" to which he replied "that's a load of crap when people say women's football is not as good as men's, sometimes it's a lot better, they are often not as aggressive and actually play using the skills required without excessive anger and some of the shots to the goals are ones to rival the best male footballers in the world".

He went on to tell me the apparently true and somewhat forgotten (and disturbing) history that he had learnt from his great grandfather...he told me "In the early 1900's women were better than men at football in a lot of ways, but men banned them playing and said their place was in the kitchen so from there onwards, men's football became more popular"...I genuinely didn't know what to say...it sounded absolutely awful. He went on to tell me "What stops men from watching women's football is that we're called perverts by other men who don't believe in women's football and want to suppress them, so a lot of men are then discouraged from watching it, it's ridiculous really".

In general, my customers have expressed a feeling of oneness, equality, celebration of diversity and a matter of national pride...that is why if I could choose to have a shop anywhere in the world...I would always choose Twickenham.

Good luck this Sunday to our wonderful girls, no matter what happens...know that there will always be an ice-cold Lucozade in my shop fridge for you girls xx

Remember...

"Never doubt the power of a woman...we were all born from one..."

My Creature-Kindness Tip Of The Week...

Stop Beetles, Mites, Silver-Fish & Ants...Without Killing!...

Sprinkle rosemary powder or rosemary oil where they come...Olbas oil does the trick too! They will stop coming without you having to harm them...light citronella candles or burn peppermint oil in aromatherapy tealight diffusers to stop them coming...you will get blessings in your life or have good karma for choosing a kind way too! This remedy also works to deter virtually any insect without harming them...like it & share it!

For ANY specific tip to stop any "pest" or insect KINDLY (for good karma/blessings), email me: InsectLoversUnite@gmail.com or join my Facebook or Instagram page "Insect Lovers Unite" for more creature-kindness tips and to ask

A Midsummer Night's Dream

by William Shakespeare

Richmond Shakespeare Society at York House Gardens, Twickenham

Hot evenings made for an as-it-should-be traditional summer open-air Shakespeare. However, this year's offering of *A Midsummer Night's Dream* was a somewhat unusual one in that it was rather randomly set in the Seventies.

Nevertheless, the pace was very good; particularly in the wonderful scene where the four lovers suffer the mistakes of Puck, leading to a terrific physical quarrel. It was exceptionally well done. Scenes moved immediately into scenes and the action never faltered.



Alexandra Upton was outstanding as Helena, and always in perfect control, noticeably in the scene with the other lovers where Puck gets it wrong again and they all get the other's partner. Her only solo speech immediately established her personality and intentions as they stood at that time. She had clearly studied her part with great success. I await her Beatrice! The suitors do not have so interesting parts, but they gave good accounts of themselves, particularly JJ DeWitt as Demetrius. His performance gained in maturity and we found a stronger lover by the end.

Another meritorious performance was that of Julian Smith as Bottom. Bottom can come across as over self-opinionated and irritating as he bullies the others, but Julian cleverly handled this and established a convincing bond with his fellow actors. His final speech, once the horses head had been removed, showed a strength of character in that he took life as it came. Great line in neighing too!

As Quince, Anna Piggott has splendid comic timing. Indeed, all the actors in the "Over-60 Drama Group" carried themselves off well in the presentation before Duke Theseus, but the gem was Denise Tomlinson as Snout who portrayed the Wall with some beautiful scene-stealing. "There are no small parts ...", but Egeus is not a large one. who has a long speech right at the beginning, and is not a very nice character. Francis Abbott got this absolutely right and got his come-uppance when he had to play a dog on four legs in the Pyramus and Thisbe play. This interlude really got to the audience and was rapturously received. It deserved this, as it was very inventive and extremely funny. We needed it badly, and we were not disappointed.



Read Ralph Stanhope's review at www.markaspen.com/2025/07/20/msnd-rss

Photography by Pete Messum

Poor Clare

by Chiara Atik

The Orange Tree Theatre, Richmond

In one sense, *Poor Clare* is a morality tale. Clare is a wealthy young noblewoman in medieval Assisi who wants to marry a rich nobleman to continue her lavish lifestyle. However, her life begins changes when she meets Francis, a former soldier and silk merchant's son, who has renounced wealth, privilege and power to live in piety and service.

It is not long before Clare is wearing a hair shirt and sleeping on the floor, much to the consternation of her family. Eventually, she crosses the Rubicon, eschewing all material comforts, and devoting her life to helping the poor, following the example of her mentor, Francis.



Whilst the setting and costumes are twelfth century Assisi, the dialogue is contemporary, idiomatic American. Blanche McIntyre's fluid direction complements Atik's fast-paced script, and the narrative rattles along. Nowhere is the effervescence of the dialogue more skilfully delivered than in the relationship between Clare and her sweetly superficial sister, Beatrice. They speak as modern teenagers about boys and clothes, their realistic rapport played with snappy comic timing.

Arsema Thomas makes an assured stage debut as Clare. Her journey from self-obsessed entitlement to a steely determination to devote her life to the poor, and the renunciation of all that this involves, is powerfully yet sensitively portrayed. Anushka Chakravarti is very funny as bratty Beatrice, blithely unquestioning of her own status and right to comfort, a Tik Tok influencer in twelfth century costume. Freddy Carter's Francis is not a stereotypical saint. He is often petulant, testy and irritable. Whilst aspiring to be devout, he is uncompromisingly forthright. Carter's characterisation goes beyond the beatific, displaying doubts about his calling, and more interesting for that.

Poor Clare is unapologetic in its aims, but it suffers from an over egging of the social conscience pudding. The parallels drawn between economic and social deprivation in medieval Assisi and in the present day become laboured. Clare comes over as overly preachy and self-indulgent, and the declamatory speech of the beggar is redolent of many similar declarations of need encountered every day in our own times. It appears to be crudely bludgeoned into the dialogue.

This sledgehammer to crack a nut approach is an irritant but should not detract from the broader message. There is much to enjoy and admire in the awakening and the journey of poor Clare.



Read Harry Zimmerman's review at www.markaspen.com/2025/07/16/poor-clare

Photography by Ellie Kurttz

I Capuleti e i Montecchi

by Vincenzo Bellini, libretto by Felice Romani

West Green House Opera at the Island Theatre, Hartley Wintney

Why is Bellini's take on the Romeo and Juliet story is not better known? His ravishing music gives that instant operatic sugar hit of emotional intensity combined with unforgettable melodies. As well as oodles of splendid arias and duets for the lovers, we get a marvellously catchy cabaletta, a superbly melancholy solo for clarinet, and some excellent ensembles.

As an operatic depiction of Romeo and Juliet, it works better than Gounod's, which can seem bloated and over-elaborate. The interruption of Romeo's and Tebaldo's fight by Juliet's funeral cortège is a wonderfully dramatic moment. The music has an emotional directness that is immensely appealing. Bellini's Guilietta is under heavy patriarchal pressure to marry for family convenience when she loves the family enemy in a way that recalls Donizetti's Lucia, but her music provokes sympathy rather than provides an opportunity for vocal showing off.



Although both are from the same Italian story, the opera is very different from the Bard's version. Romeo and Juliet are already lovers before the opera starts. Romeo is the leader of the Montagues and has killed Juliet's brother but is now suing for peace. There is no Mercutio. Lawrence is no longer a friar, but Lorenzo, a member of the Capulet household. Juliet is the only female character, cruelly isolated without a nurse or any kind of female confidante. The result is something ideally operatic, focussing on the characters' feelings and provoke them to song with only a minimal quantity of exposition.

Director Lysanne Van Overbeek's effective production, with inventive lighting from Sarah Dell, fields very fine singers. Fflur Wyn (Guilietta) and Katie Coventry (Romeo) are an appealing pair of lovers, well able to meet the challenges of this music and singing with an appealing directness, simplicity, and musicianship that takes a good deal of skill. Good support is provided by Julian Henao Gonzalez (Tebaldo), Timothy Nelson (Lorenzo), and Henry Waddington (Capellio).

John Andrews, conducting the Orpheus Sinfonia, takes a brisk approach to the score, but knows when to let it breathe, in a musically fine performance.

The ravishing lakeside setting is magical and the fragrance of the flowers and the wonderful lighting effects in the gardens after the performance are glorious. West Green Opera is a well kept secret that deserves to be far better known as an alternative to Glyndebourne, Grange or Garsington.

Read Patrick Shorrocks' review at www.markaspen.com/2025/07/19/cap-mont-wgho

Photography courtesy of WGHO

Curtain Raiser Party!

at the Mary Wallace Theatre - Saturday, August 2nd

The Richmond Shakespeare Society are pleased to announce their August **Curtain Raiser Party** to be held on Saturday, August 2nd in the theatre. We invite you to learn more about our current season of plays - September till Christmas - and to witness the unveiling of our Spring/Summer 2026 Season.

Directors of the plays will be on hand to discuss their productions and to provide further information. Meet the casts and crew of recent productions. Enjoy a personal guided tour of our theatre - foyer, stage, dressing rooms, workshop and costume store - and learn about the various departments and teams which underpin all our shows and the opportunities available to become involved in a production, onstage or backstage.

In addition, we hope to be able to announce the Swan Award nominations (Best Production, Best Actor, Best Youth Production etc) for the past year's shows. Above all, it's a party to which all are invited. Whether you are already an RSS member, interested in joining, or simply curious, you will be warmly welcomed.



RSS
RICHMOND SHAKESPEARE SOCIETY

JOIN US

A vibrant, dynamic and welcoming amateur theatre company in the heart of Twickenham (south-west London), the RSS specialises in bringing the timeless works of Shakespeare to life, along with captivating performances from various genres. Whether you're a performer, a behind-the-scenes maestro, or a theatre lover, there are multiple opportunities to be involved. We believe in the power of inclusivity, fostering a warm and supportive environment.

richmondshakespeare.org.uk

THE MARY WALLACE THEATRE
THE EMBANKMENT, TWICKENHAM TW1 3DU

Icons for Twitter, Instagram, Facebook, and YouTube.

The Mary Wallace Theatre (close to the Barmy Arms on Twickenham's Embankment). From 7pm on Saturday, August 2nd.

Twickenham Novice Swaps Pizza for Pedals in Epic Teenage Cancer Trust Challenge

Move over Tour de France – Jason Hunt a local resident in Twickenham and Operations Development Manager at Domino's Pizza Group, is trading in his pizza uniform for lycra shorts, taking on one of Britain's toughest cycling challenges, aiming to raise £20,000 for Teenage Cancer Trust.

Starting today, Friday 25th July, Jason will join two Domino's colleagues, cycling from John O' Groats to Land's End – a gruelling 1,500km (almost 1,000 miles) in just eight days. That's 46,000 feet of climbing, with some days stretching beyond 200km and 8,000 feet of elevation. For three novice cyclists, it's a challenge that's as tough as it gets – physically, mentally and emotionally.



Jason Hunt (left), Peter Blockley (middle),
Josh Wilson (right)

The "Pizza Pedallers" are taking on this epic ride to celebrate a decade of partnership between Domino's and Teenage Cancer Trust, the company's national charity partner. Every penny raised will help support young people facing cancer across the UK. Since the partnership began in 2015, Domino's has raised more than £8 million for Teenage Cancer Trust to help ensure cancer doesn't stop young people living their lives.

In true Domino's style, the team will be donning the brand's iconic garlic & herb dip outfits and carrying a pot of The Big Dip as they cycle the length of Britain.

Jason, who has worked at Domino's for an impressive 22 years, is more accustomed to long journeys on his motorcycle than on a bicycle. While he's no stranger to endurance on two wheels, this will be his first time tackling such a distance under his own steam, all in support of a cause close to his heart.

Jason Hunt, who lives in Twickenham, said: *"I've never done anything like this before, but knowing we're raising money for such an important cause is all the motivation I need. I'm proud to represent Twickenham and Domino's on this journey to hopefully raise as much money as possible. After 22 years with Domino's, I'm used to pushing myself, but this is a whole new level - especially as a novice cyclist who usually prefers an engine! I'm really looking forward to seeing Britain from a cyclist's perspective, pushing myself physically and mentally and raising vital funds for Teenage Cancer Trust."*

The team will be cheered on by Domino's colleagues, Teenage Cancer Trust ambassadors, and hopefully, plenty of locals along the way. Follow the team's progress on Instagram at @Pizza.Pedallers. TCT and keep an eye out for live updates, behind-the-scenes videos and more.

To support the challenge and donate to Teenage Cancer Trust, visit the [JustGiving](#) link.



St Mary's University

Graduations at St Mary's Showcase Campus Spirit, Celebrate Students, and Honour Community Impact

St Mary's University, London, has celebrated its graduating students this month, with ceremonies running from 15th to 19th July. The University, which is currently celebrating its 175th anniversary, also welcomed guests Dame Rachel De Souza, Noreen Doyle and Nik Cavill, who were awarded honorary doctorates.



24 ceremonies were hosted by the University, over six days, with Vice-Chancellor Professor Anthony McClaran and University Provost Professor Sara Spear presiding over events. Services of thanksgiving were led by The Right Reverend Richard Moth, Bishop of Arundel and Brighton, and St Mary's Chair of Governors; Mgr Roderick Strange, Assistant Chaplain; Mgr Dr Paul McPartlan, Rector of Mater Ecclesiae College; and Canon Peter Newby, the University's Chaplain.

St Mary's Vice-Chancellor Professor Anthony McClaran commented:

"We were delighted to host our graduates and their proud families and friends on campus this week to celebrate their significant achievements. The days saw bright sunshine, great joy, rapturous applause, and a few happy tears. I'd like to thank our teams from across the University for making these special events, taking place during our 175th anniversary celebrations, a great success."

"The strength of our community spirit, generous welcome, and focus on the individual experience of our students, resulted in a clear demonstration of our values, and of what is so special about this University."

Within a ceremony on Wednesday 16th July, Noreen Doyle received the honorary doctorate in recognition of her considerable impact internationally in the finance and banking sectors, her advocacy for more

women in finance, and her commitment to ensuring that people have access to higher education and the opportunities that creates.

Thursday 17th July saw Dame Rachel de Souza, Children's Commissioner for England, [awarded an Honorary Doctorate in Education](#), celebrating her lifelong commitment to advocating for children, as well as her outstanding contribution to the field of education as a teacher, headteacher, and Chief Executive of a multi-academy trust.

With a distinguished 25-year military career, and subsequent work to support veterans through the Marines Charitable Trust, Nik Cavill, an alumnus of St Mary's, was presented with his award on Friday 18th July in recognition of his outstanding contributions.

The day was captured by [@YourStMarys](#) on Instagram and [@StMarysUniversity](#) on TikTok.

Founded in 1850, St Mary's University is one of the country's oldest Higher Education Institutions and has been inspiring excellence for 175 years. Having achieved full university status in 2014, St Mary's is also one of the top-rated modern universities nationally.

The University has ambitious plans for the future to ensure it continues to make a positive impact locally, nationally, and globally. A key development for St Mary's is the launch of the School of Medicine, which will begin training doctors in 2026 and the University has recently started construction on the Centenary Building. This project celebrates a century of St Mary's in Strawberry Hill and will be home to the School of Medicine and provide new high-quality teaching spaces for the University

At its heart, St Mary's remains a university committed to delivering outstanding outcomes for its students and is rated in the top 10 nationally for teaching quality for the 2025 Sunday Times Good University Guide.



**St Mary's
University**
Twickenham
London

Creative Arts Students Have Work Displayed at UAL Origins Creatives Exhibition

We are very pleased to announce that three students in our Creative Industries department were accepted to display their work in the UAL [Origins Creatives](#) exhibition at Mall Galleries in mid-July.

Origins Creatives is the UAL Awarding Body's annual celebration of student achievement and an opportunity for students, teachers and families to come together and celebrate student creativity and hard work. It brings together student work from across the UAL subject areas of Art and Design, Fashion Business and Retail, Creative Media, Music Performance and Production, Performing Arts, Entry Level 3 in Art and Design and Performing Arts, Professional Diplomas, and the Extended Project Qualification.

Our students who were chosen for this brilliant accolade are as follows.

Simran Thandi, UAL Level 3 Extended Diploma in Creative Practice: Art, Design and Communication ***Organic Communal Spaces***

Simran's project focuses on renewing park gazebos, by transforming it into a reflective space that encourages mental clarity. Her concept is constructing small intimate spaces (fit for 2-4 people) to engage in private conversations or self-reflection. While the design is rooted in surrealism, her approach focuses less on the literal visuals of Surreal art, and rather in the more reflective, subconscious exploration of the movement. The organic architecture is designed to be scattered throughout parks and urban spaces. With each space, drawing inspiration from one of the Earth's elements- earth, wind, fire, water- balancing open designs features for casual conversation, to more enclosed private spaces. By incorporating greenery and water features, it invites a sense of primal connections, evoking a spiritualistic atmosphere. The interior will remain minimalistic, calm and contemporary, juxtaposing the surreal more expressive exterior- as a metaphor for the chaos in the "conscious mind" and the inner peace in the "subconscious".



Dylan Rodriguez Cardona, UAL Level 3 Extended Diploma in Creative Practice: Art, Design and Communication ***Renaissance Con Flow***

Dylan has interpreted the overarching theme of 'House of Dreams' by looking back at what it meant to grow up as a first-generation Colombian in London, using fashion, club culture and street art to tell that story. Inspired by his parent's journey in the 80s, their memories and photographs, he mixed Spanglish, bold colours and nightclub energy to express the uniqueness and pride in his heritage and parents experience. Influences like Jean Michel Basquiat, Leigh Bowery and vintage markets helped him shape the irreverent, raw style of his fashion vision.



Ben Hargreaves, UAL Level 3 Extended Diploma in Creative Media Practice (TV & Film) ***Post It Note***

Ben created this short film as their final major project for the extended diploma. Inspired by the work of Wes Anderson, Ben created a slow-burn romantic drama.

Post It Note is about two flatmates, Olivia and Daniel, who never see each other but communicate through leaving post-it notes for each other. From simple things like "put your dishes away", to subtle flirting. They then bump into each other when one is leaving the house... Will their feelings change when they finally meet?

Huge congratulations to our talented students and their achievements!

TWICKENHAM RFC

LIONS TEST

MATCHES

LIVE AT THE CLUB



BAR OPEN 10:30

KICK-OFF 11AM

KITCHEN PROMO / PIZZA & PINT £12

Red Roses 32-Player 2025 Women's Rugby World Cup Squad Confirmed



The 32 Red Roses who have the honour of representing their country in the home 2025 Women's Rugby World Cup have been confirmed. Head coach John Mitchell's squad comprises 18 forwards and 14 backs, averaging an age of 26 and totalling a combined 1,374 international caps.

Twenty-four of the group have previously competed at a World Cup including captain Zoe Aldcroft who will lead her country in her third World Cup, supported by 2014 winner Marlie Packer and Olympian Megan Jones as vice captains. Emily Scarratt is set to compete in her fifth tournament with Alex Matthews and Packer in line for their fourth. Abi Burton, May Campbell, Mackenzie Carson, Kelsey Clifford, Maddie Feaunati, Lilli Ives Campion, Jade Shekells and Emma Sing are all World Cup debutants.

"It is a rare and awesome opportunity for this group to represent the Red Roses at a home World Cup," Mitchell said. The selection process is never easy. It's been a thorough two-year process to select the right blend of positional cover, skill, mindset and connection – we believe this is a squad that can win the World Cup. Every experience and challenge has brought the 32 to this point in their life and career, and they have all earned their place. They should be proud of the opportunity to create history together whilst knowing we have to earn the right to progress throughout the World Cup. We're excited by what's to come and we'll continue to work hard into the tournament with our focus on preparing for our opening match against USA in less than a month's time."

Captain Aldcroft added: *"To lead the team into a home Rugby World Cup is an incredible feeling. This group have a fantastic opportunity to inspire young boys and girls all over the country - it's something we have spoken about as a collective and we're relishing the chance to do so. Pulling on the white shirt is always a massive privilege and we can't wait to do that, backed by our amazing home support."*

The Red Roses will feel the support of the nation all over the country, taking on USA in the north at Sunderland's Stadium of Light on the opening night of the tournament (Friday 22 August, KO 1930 BST).

An East Midlands outing follows as Mitchell's side come up against Samoa at Franklin's Gardens, Northampton in their second match (Saturday 30 August, KO 1700 BST) before a trip to the south coast to face Australia at Brighton & Hove Albion Stadium to round off the pool stage (Saturday 6 September, KO 1700 BST).

Ahead of the showcase in Sunderland, England warm-up against Spain at Mattioli Woods Welford Road, Leicester, on Saturday 2 August (KO 1500 BST). Tickets for the match are priced from £15 per adult, £5 for children or a family ticket (2x adults and 2x children) from £35 and are available [here](#).

Forwards (18)

Zoe Aldcroft (Gloucester-Hartpury, 63 caps)**
Lark Atkin-Davies (Bristol Bears, 66 caps)*
Sarah Bern (Bristol Bears, 71 caps)**
Hannah Botterman (Bristol Bears, 56 caps)*
Abi Burton (Trailfinders Women, 2 caps)
May Campbell (Saracens, 3 caps)
Mackenzie Carson (Gloucester-Hartpury, 21 caps)
Kelsey Clifford (Saracens, 13 caps)
Amy Cokayne (Sale Sharks, 83 caps)**

Maddie Feaunati (Exeter Chiefs, 15 caps)
Rosie Galligan (Saracens, 24 caps)*
Lilli Ives Campion (Loughborough Lightning, 2 caps)
Sadia Kabeya (Loughborough Lightning, 21 caps)*
Alex Matthews (Gloucester-Hartpury, 75 caps)***
Maud Muir (Gloucester-Hartpury, 40 caps)*
Marlie Packer (Saracens, 110 caps)***
Morwenna Talling (Sale Sharks, 22 caps)*
Abbie Ward (Bristol Bears, 74 caps)**

Backs (14)

Holly Aitchison (Sale Sharks, 40 caps)*
Jess Breach (Saracens, 45 caps)*
Abby Dow (Unattached, 52 caps)*
Zoe Harrison (Saracens, 57 caps)**
Tatyana Heard (Gloucester-Hartpury, 29 caps)*
Natasha Hunt (Gloucester-Hartpury, 80 caps)**
Megan Jones (Trailfinders Women, 25 caps)*

Ellie Kildunne (Harlequins, 52 caps)*
Claudia Moloney-MacDonald (Exeter Chiefs, 35 caps)*
Lucy Packer (Harlequins, 31 caps)*
Helena Rowland (Loughborough Lightning, 39 caps)*
Emily Scarratt (Loughborough Lightning, 118 caps)****
Jade Shekells (Gloucester-Hartpury, 2 caps)
Emma Sing (Gloucester-Hartpury, 8 caps)

**denotes number of Women's Rugby World Cup tournaments played*

Connected by our nature - Brentford unveil 2025/26 away kit

Written by Brentford Football Club

Brentford's 2025/26 Joma away kit, celebrating our relationship with the bee, is now on sale in the new club shop, The Hive Superstore and online

Brentford has launched the club's new away kit for the 2025/26 season in partnership with official kit partner Joma.

The 2025/26 away kit reflects how Brentford is connected by our nature, both in the club and the community. It focuses on the club's historical association with bees.

The kit is available to [purchase online now](#), and in our [new club shop, The Hive Superstore](#) from 10am.

As with the 2025/26 home strip, fans can purchase an authentic shirt, worn by players on the pitch to elevate performance, as well as a replica shirt.



Celebrating the bee

The new away kit celebrates Brentford's connection with the bees which goes back to the early part of the 20th century.

The new brown away shirt features gold-coloured detailing and marks the first time the club has used our single Brentford bee logo. It features a bee-wing pattern throughout the shirt. Gold detailing is also seen across the collar, which has a special 'Bees' logo on the back, as well as the sleeves.

The authentic shirt is created with a jacquard weave. Intricate designs are woven directly into the fabric rather than being printed or embroidered. This technique and the micro-mesh ventilation panels help keep the kit lightweight and breathable, so players' bodies stay dry even during peak performance.

To support our efforts to be more sustainable, replica away shirts are made of 100 per cent recycled polyester. Using recycled polyester prevents materials from being sent to landfills and requires less energy than conventional polyester.

The away men's first-team shirt features this season's front-of-shirt partner Hollywoodbets and Cazoo as our sleeve partner. Kits for the Brentford B team, Brentford Women and academy teams will feature Cazoo as the main shirt sponsor and PensionBee on the sleeve.

Connected by our nature

The new away shirt launches with a campaign [film](#) paying homage to our history as 'the Bees'.

Men's first-team players [Mikkel Damsgaard](#), [Yehor Yarmoliuk](#), [Michael Kayode](#) and Brentford Women players Nikki Woods and Lucy Potter all feature in the film set in the nearby Royal Botanic Gardens, Kew.

Looking ahead to the new season, the film draws inspiration from the buff-tailed bumblebee, the bee that is featured within the club crest.

Its traits of resilience, adaptability, determination, purpose, and connection mirror the spirit Brentford brings to the pitch and local community.

The narrative celebrates the hive-like unity of the club and its supporters – a unified collective where every individual plays an important role, just like bees working together for protection, regeneration, and success.

Purchase your away shirt

As with the club's home shirt - [which celebrates 100 years of Brentford players in red and white](#) - the away shirt adult price is frozen at £65 in our ongoing commitment to affordable football. Junior shirts will also be available at a reduced price of £45, down from the 2024/25 season.

In line with the Premier League's voluntary ban on front-of-shirt gambling sponsors, this season's home and away strips will follow a one-year cycle as our partnership with front-of-shirt partner Hollywoodbets will come to an end after the 2025/26 season.

[Purchase your 2025/26 Brentford away shirt now](#)



Donate

A small donation will help to keep the Tribune online

CLICK [HERE](#) for a one-off donation

or

CLICK [HERE](#) for a monthly donation

The Tribune is published weekly by members of our community who stepped up at the time when some local newspapers closed or changed style and content. Local community journalists and contributors living in our Borough play an important role in producing the Tribune but like any newspaper the Tribune has essential fixed costs.

Supporting the Tribune with a small donation will help you to keep local news and views alive; support is very much appreciated.

We would like to say "Thank You" to all those who support the Twickenham & Richmond Tribune; your support is very much appreciated.

Thousands read The Twickenham & Richmond Tribune

If you are reading this you could be advertising your business with The Twickenham & Richmond Tribune. Community rates are available

Contact: advertise@TwickenhamTribune.com

View ad details at www.TwickenhamTribune.com/advertise

Contact

contact@TwickenhamTribune.com

letters@TwickenhamTribune.com

advertise@TwickenhamTribune.com



Published by:

Twickenham & Richmond Tribune (in association with World InfoZone Limited)

Registered in England & Wales

Reg No 10549345

The Twickenham Tribune is registered with the ICO under the Data Protection Act, Reg No ZA224725

©Twickenham & Richmond Tribune. All rights reserved. No part of this publication may be used or reproduced without the permission of Twickenham & Richmond Tribune. While we take reasonable efforts, this online newspaper cannot be held responsible for the accuracy or reliability of information. The views and opinions in these pages do not necessarily represent those of The Twickenham & Richmond Tribune.

[Terms & Conditions](#)